

DS

# Pattern Designer DiVA v4.5i



## Designer Software

### DiVA - Designer in Virtual Apparel (TM)

# v4.5i

R11.1 Pro V.b31



Windows PCs



## CAD Pattern Marker

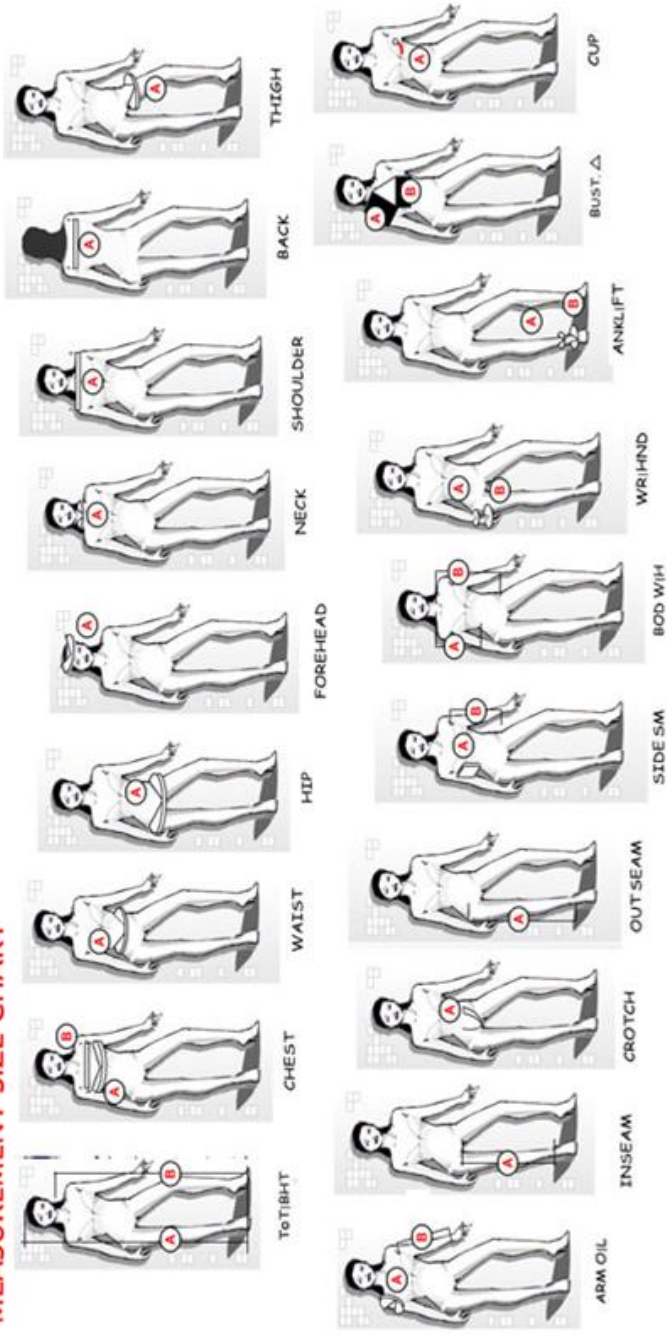
[www.DesignSew.com](http://www.DesignSew.com)



Pattern Designer DiVA v4.5i



# MEASUREMENT SIZE CHART



# Software Manual DiVA Designer v4.5i r11.1

## Table of Contents

Designer DiVA Pattern Marker, Render & Edit Version v4.5i

Table of Contents.....	Pg 1
Introduction.....	Pg 2
Quick Start.....	Pg 3
Install & register.....	Pg 4
Pattern Manager.....	Pg 5
Pattern Manager GUI <i>fig 1-1</i> .....	Pg 6
Pattern Designer & CAD.....	Pg 7
Pattern Designer & CAD GUI <i>fig 1-2</i> .....	Pg 8
Pattern Combos & Sliders.....	Pg 9
Size files.....	Pg 10
Rendering Patterns.....	Pg 11
Printing Patterns.....	Pg 12
I Online Patterns.....	Pg 13
Appendix, Size Chart.....	Pg 14

Copyright 2010, All Rights, Licensing and Trademarks Reserved.

# Introduction

Thank you & Welcome to DesignSew Designer DiVA Pattern Designer & Marker Software. Version 4.5i is a system upgrade from versions vDW1.2,2.7,3.0,DS3.5,4.0- 4.5

This manual is a concise guide to get you up & running the software. After reviewing this manual for designing & creating, editing, rendering & digitizing patterns on a Windows PC.

There are additional training resources, patterns and videos available at the [gopattern.com](http://gopattern.com) website.

The software is a studio of tools to draw, illustrate and render pattern designs to input measurements. The software is designed to do as much as possible as easy as possible, both the paint tool and CAD tool require knowing only 5 buttons.

New features in DiVA v4.5i; the new pattern folio manager allows you to manage your patterns as well as search and browse online patterns and files. The online patterns are without a doubt the most exciting new feature with the ability to source and create patterns from the Internet and other pattern designers.

Save files as CAD, DGN (Design), JPG (Image) and the PDF Razer (Raster Razor) to cut/slice the patterns into multipage PDF and scaling of patterns into printable PDFs.

## Requirements

The software Requires Windows PC 95-XP-Vista-Ed7  
50mb disk space. Printer & Digita Camera.

Questions or Comments Email [info@designsew.com](mailto:info@designsew.com)

Copyright 2010 All Rights & Trademarks Reserved



## ✓ Quick Start Guide



## Installing the Software in Quick and Easy:



### Downloading or CD Installation



The installer will start automatically after inserting the CD run >DiVA\_45i.exe< Double Click to run the application if the CD does not start. After install; Select Register, Input Email address and click Email (*below*) to set up your ipattern account.

[back](#) **Pattern Designer**

**Register**  
**DiVA**

Enter your Email Address below and click [Email] to set your Pattern account Password to the Email address input below.

Name

✓ Email

Product Key

Password

 Set Email



#

To finish, Click Register Input Email and click the Email button. (*See above*)

## Pattern Manager

The manager is an interactive user interface for managing, searching and selecting a pattern folio from files on your computer or the Internet. The search manager input a search word and select search for patterns on your computer or the Internet. Select the pattern you want and select 'PATTERN' and the Folio will open for editing and creating Patterns and rendering to input Size files. The trays allow previewing designs before opening.

[Designer] To open the designer CAD interface to draw, Edit & Render general patterns

[Pattern] To open the selected folio and render, edit and draw patterns from the selected pattern folio.

[Login] Allows you to access your acct and Internet patterns.

[Manage] Opens and closes the Manager

[Pattern] Displays the status of the Pattern & permission status to open the pattern.

[Site] Visit the site for the selected pattern

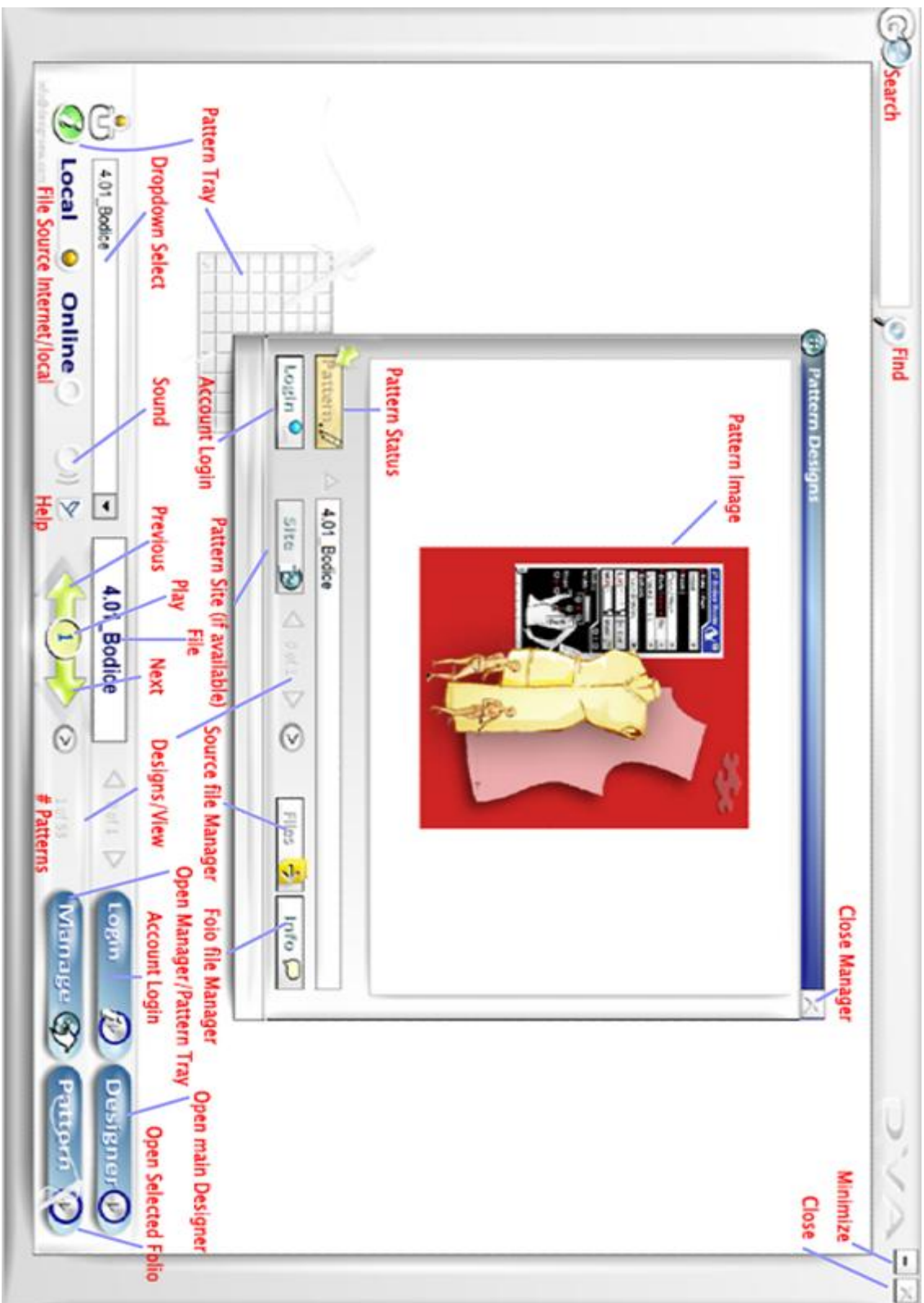
[Files] Move, copy and delete files in the Folios to other folios or the main Designer Directory.

[Edit] This sets up the configuration of the Pattern for items like yardage, price, notions, search terms and other production details.

[Search] Searches the Internet or local system for the entered word and returns a tray of matching patterns for you to peruse.

[Pattern Tray] Displays the Pattern covers in a tray GUI

*Refer to Fig 1-1 (page 6)*



## Pattern Designer & CAD

The drawing Interface windows are set up to facilitate the pattern making processes from scaling, drafting in CAD, Entering Size measurements, Rendering & Sizing and Print Plotting.

[[Tools]] The tools is the panel to the left of the drawing area that performs the CAD drawing functionality. The panel allows you to Save and select add lines, polygons and drawing details as well as load images to digitize into CAD.

[LayOut] The layout tool provides coordinates, rotate, grid and metric conversion.

[Print] The Virtual Plotter prints the patterns in multipages to a set scale.

[JPG] To save the current CAD file/Drawing to a JPG File or PDF document.

[Project] Set Pattern CAD files into a linked management file.

[Plot] Toggle ON/OFF the point references if using the radial plot system for reduced/quarter scale drawings.

[Print Screen] Print out the drawing area.

[Load Module] Load additional and Addon panels and tools. The painter and Virtual Plotter are Addons.

[[Pattern Marker]] The pattern marker is for entering Size & Scale Pattern files, Select a design DGN master to draft and generate out new CAD files and projects.

[Combo] The combo tray allows you to visually set up and interchange pattern DGN files to create a pattern set. The top tray contains the pattern covers and the bottom tray contains the pattern DGN masters.

To Render a Pattern, <1> Select [[Pattern; Marker]] input a new CAD filename/default="temp"

<2> Select a DGN Set or Block to mark <3> Select a Size file and Scale. Click Draw.

**Temp**

Style: Draw Pattern

TS-Sleeve  
TS-collar  
TSCUFF

Temp0  
Temp1  
Temp10  
Temp11  
Temp2

CAD File

New Clear  
Join Delete  
Save

Details

Models

0°  
100  
1:1  
000000  
1

100  
100  
100  
100

Set

100  
100  
100  
100

100  
100  
100  
100

Layout X: 282.65  
Y: 20  
W: 497.35  
h: 560

Mandar  
front

PDF Razer  
Load JPG  
Save JPG

Step 4 of 8: Define the final poster size

Image size  
Absolute size: Width: 52 cm, Height: 53.0259 cm  
Size in pages: Width: 3 pages, Height: 2.0594 pages  
Size in percent: Size: 102 %

Image alignment

001 delay bar top cream  
007 Ab  
042 lizard-right bottom

Module 0 Designer Boote 4

1 of 10

Sloper

Pattern Marker

Drawing File Combo

BK2401 DOLL\_18

Designs SETS BLOCKS

BK2401

Scale 1: 1 Pages: 1

Input Draw

DOLL\_18


Inch

TOTRIBHT	18	15.25
CHEST	13	5.5
WAIST	12	
HIP	13	
FOREHEAD	8	
NECK	6.5	
SHOULDER	8	
BACK	5.5	
THIGH	7.25	
INSEAM	8	
CROTCH	8	
OUT SEAM	8	
SIDE SM	1.5	3.5
BOD W/H	5	6.5
ARM O/L	7	4.5
WR/H/ND	3.5	4
ANKL/FT	3.5	4
BUST Δ	2.5	2.5
CUP		
EASE		

000000

1.25 1/2 0.60

1

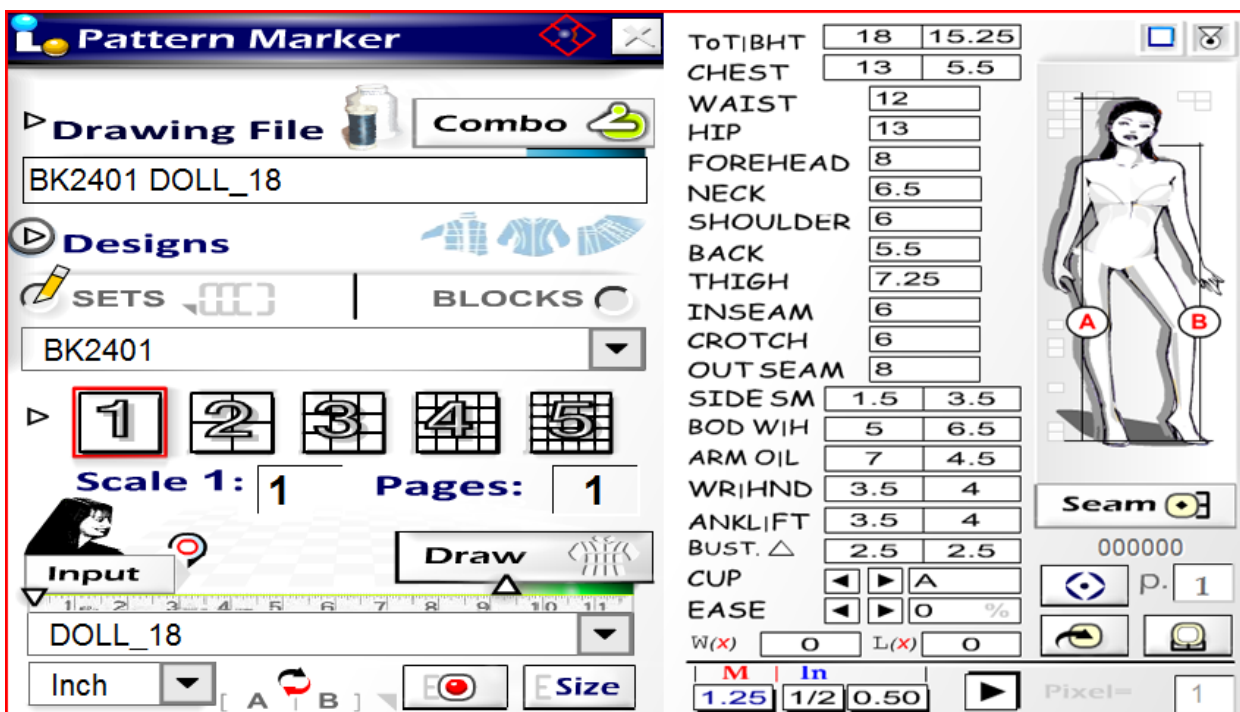


## Size Measurement files

The software uses input measurements as references to render and scale gradable patterns from DGN to CAD files.

DGN files are selected from the module dropdown as pattern single Blocks (Individual Pattern Pieces/page) or Sets a set of Patterns combined to create a Combo Set, Sleeve, Collar Bodice etc.

To create a Pattern for an individual, pet, doll or home project input the measurements as outlined in the 'How to Measure' video available online. A Size Chart form for you to copy is located at the back of this manual in the appendix.

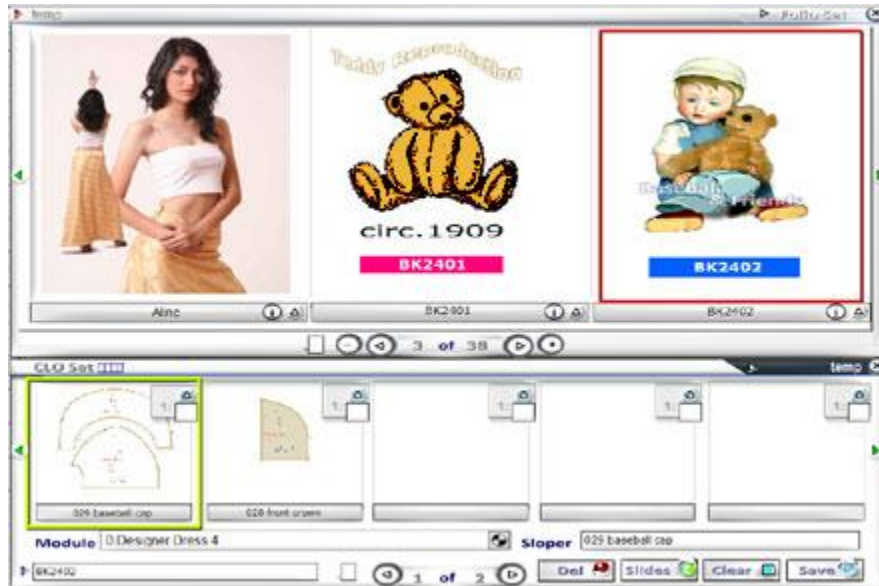


To create or modify a size file enter the filename in the box or select a size file from the dropdown. Enter the measurements into the form and click 'Size' this will save/modify the file for when individual measurements change over time.

The <Input> is a new tool that allows you measure a photo using a sophisticated set of callipers.

## Pattern Combos, Styler, Palettes & Sliders

The combo sliders allow you to select, modify and create a design combo or select a DGN pattern sloper module to create. The <Combo> button in the [[Pattern Marker]] opens the panel below:



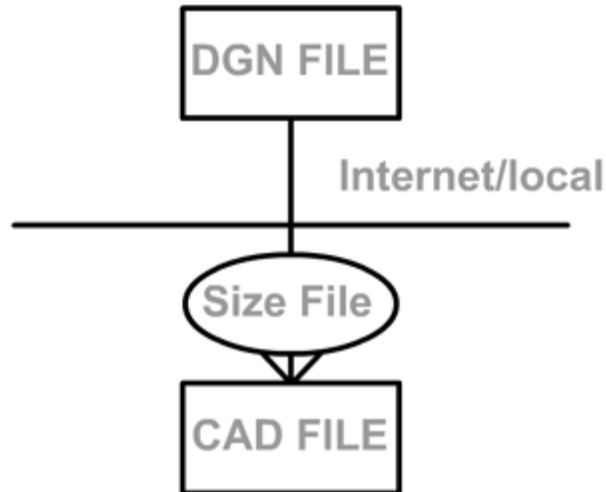
The drop down allows you to add modules to the current set. The pattern added will be displayed in the bottom tray and can be added or deleted. Select <Save> to save the edits or deletions.

The selected Combination is loaded into the marker for rendering. The <Draw> button will render the patterns set as a project with the same filename as the Drawing file in the [[Pattern Marker]]

The [Styler] The Styler allows you to use a 3d paperdoll style GUI interface to select different pattern compatibles to design and style within the possible combinations and fabrics. The fabric palette allows you to select a swatch to apply to a combo element. Palettes The palettes in the tools allow you to select a hexadecimal color to apply to styles and the painter as well as drawing details.

## Rendering Patterns

Drawing CAD Patterns manually to each Sizes/ Slopers is a lot of labor, Designer provides technology for shaping patterns dynamically from DGN files located on the PC or on the Internet to the Size specified.



The illustration above shows how a DGN file is converted into a rendered and Sized CAD Pattern for editing, printing & sewing later on.

To Render a Pattern:

<1> Select [[Pattern; Marker]] input a new CAD filename/default="temp"

<2> Select a DGN Set or Block to mark

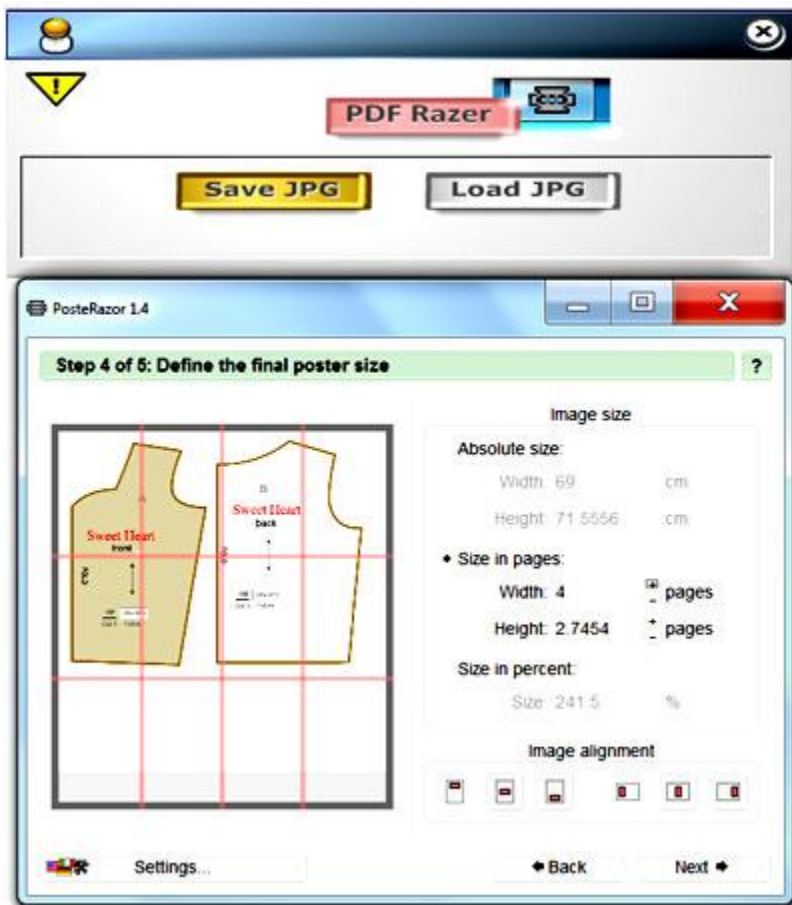
<3> Select a Size file and Scale. Click Draw.

The Pattern Set or Block will be displayed in the drawing area after taking a few moments to draw out the CAD files.

## Printing Patterns

The software provides 3 processes of plotting Patterns as JPG, CAD or PDF the most common is multi-part PDF.

The PDFRazer Razor/ Raster is located in the <JPG> panel selected from the top Navbar. The PDF tool allows you to generate multipart PDFs then save and use or email and sell & share pattern creations.



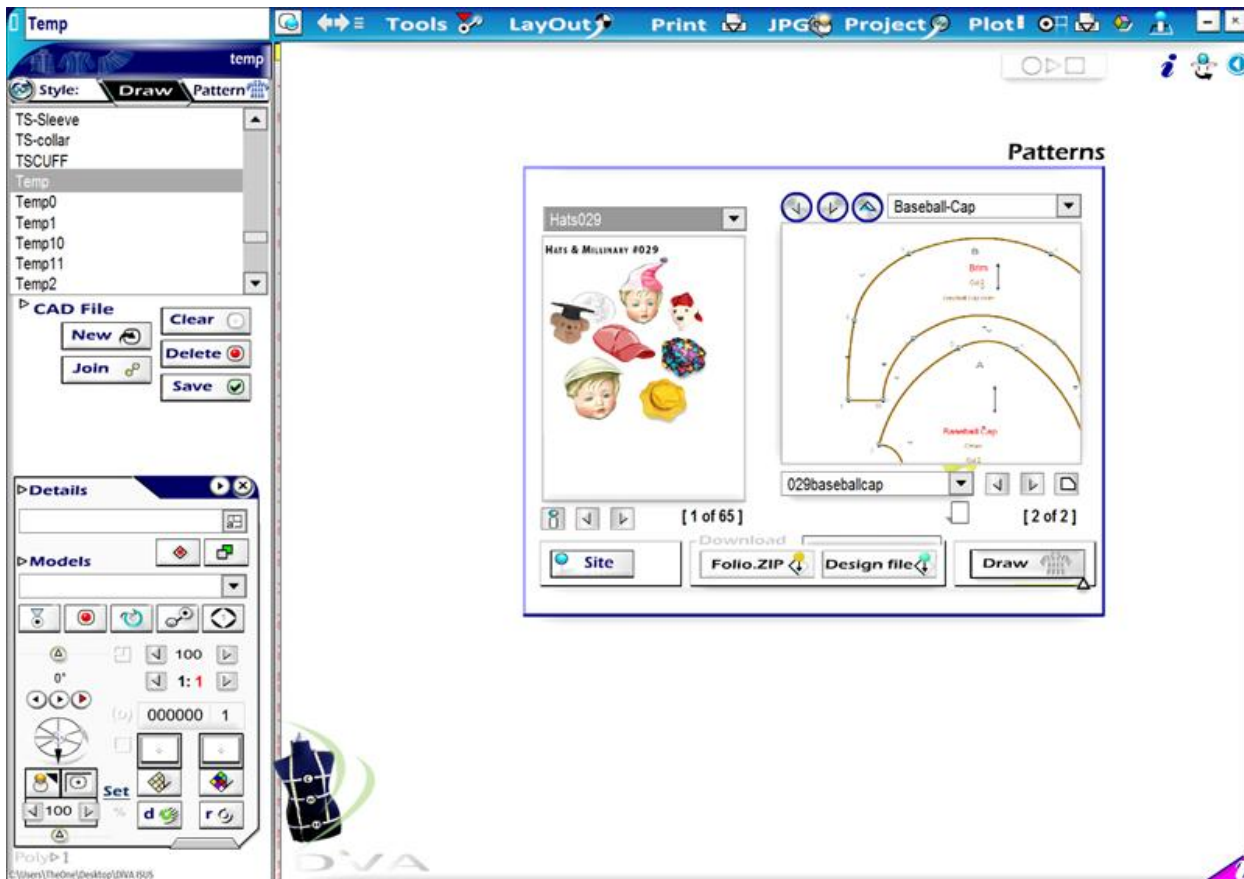
The PDF Razer shown above shows a pattern marked for multipage layout. Save the Pattern as PDF by following the screen instructions.

The scaled plot system allows you to save the pattern to a single page with a Plot chart for transferring the pattern full size onto the fabric with chalk and a rule.

## Online *i* Patterns

The Designer software is designed to operate 'Live' with the Internet and is capable of rendering patterns to any size files directly from the Internet.

The ability to create a patterns and share it instantly is available with Internet and Network technology.



The DGN pattern above is located on the Internet and can be digitized to any size file located in the Size file dropdown.

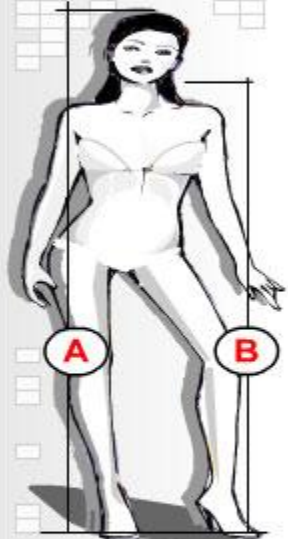
To join the online *i* patterns a valid Email address and account are required. The setup process takes care of account setup automatically.

If you have any questions contact us at [info@designsew.com](mailto:info@designsew.com)

Appendix, Size Chart

Date		In By:		Size Chart	
1 2 3 4 5 6 7 8					
TOT BHT	<input type="text"/>	<input type="text"/>			
CHEST	<input type="text"/>	<input type="text"/>			
WAIST	<input type="text"/>				
HIP	<input type="text"/>				
FOREHEAD	<input type="text"/>				
NECK	<input type="text"/>				
SHOULDER	<input type="text"/>				
BACK	<input type="text"/>				
THIGH	<input type="text"/>				
INSEAM	<input type="text"/>				
CROTCH	<input type="text"/>				
OUT SEAM	<input type="text"/>				
SIDE SM	<input type="text"/>	<input type="text"/>			
BOD W H	<input type="text"/>	<input type="text"/>			
ARM O L	<input type="text"/>	<input type="text"/>			
WR HND	<input type="text"/>	<input type="text"/>			
ANKL FT	<input type="text"/>	<input type="text"/>			
BUST. △	<input type="text"/>	<input type="text"/>			
CUP	<input type="text"/>	<input type="text"/>			
EASE	<input type="text"/>	<input type="text"/>	<input type="text"/>	%	
W(x)	<input type="text"/>	L(x)	<input type="text"/>		

Name:



Note:

Pattern Software DiVA v4.5i for Designing Patterns on a Windows PC.

Thank you,

The DesignSew/Dollwear Design Team Copyright (c) 2010 All Rights Reserved



Simple One click Patterns. Pattern Design simply from online or offline source files. Select or measure your model, search/edit designs and in a click of a button to Render...Sized patterns ready to Sew CAD, Edit, Draw, Sketch, Print & Design. Select patterns or create your own Patterns styles.

## Design Software



◆ **Windows PC**  
Requires Windows PC 95-XP-Vista-  
50mb diskspce. Printer & Digital  
Camera. Copyright 2010



DS  
Pattern Designer DiVA v4.5i